



ROYAL GALA
TOURS

ABN 22 451 627 039



2016/17 TOUR PROGRAM

including Bunbury Day Tours



DAY TOURS

EXTENDED TOURS

CHARTERS

ROYAL
GALA TOURS

1300 233 556

Terms and Conditions

Itinerary

Royal Gala Tours reserves the right to cancel or alter the tour itinerary as deemed necessary without prior notice. Tour alterations may occur because of factors outside the control of Royal Gala Tours, i.e. weather or road conditions. Any / all costs incurred by passengers as a result of cancellations shall be borne by the passengers. Due to the possibility of unforeseen events, the exact arrival and departure times cannot be guaranteed by Royal Gala Tours.

Tour Cancellation

A minimum number of passengers are required to operate each tour. Royal Gala Tours reserves the right to cancel a tour if these minimum numbers are not met. In this case, an alternative tour or full refund shall be arranged as agreed between Royal Gala Tours and the passenger.

Conditions of Travel

Passengers are to comply with the instructions of the representatives of Royal Gala Tours at all times. Passengers shall not remain on the coach whilst in a position of being unable to care for themselves, or if their behavior, as determined by the representatives of Royal Gala Tours, is offensive to other passengers. Royal Gala Tours will not be responsible for the expenses of such persons precluded from completing the journey for these reasons.

Consumption of alcohol, food or drinks (excluding water) is not permitted on the coach.

Royal Gala Tours does not accept responsibility for loss or damage to luggage. Royal Gala Tours reserves the right to inspect hand luggage prior to boarding the coach. Please be aware firearms, explosives, volatile fuels and spirits may not be carried.

Medical Condition

Passengers should advise a representative of Royal Gala Tours of any medical condition that may affect their journey. However, no responsibility shall be taken for such conditions by the representatives of Royal Gala Tours.

Dietary considerations

Passengers should advise a representative of Royal Gala Tours of any dietary considerations that may need to be addressed prior to the commencement of the tour.

Pickup Points

Royal Gala Tours pickup from a wide range of points as listed below.

Manjimup	-	Manjimup Visitor Centre
Bridgetown	-	Transwa Bus Stop
Greenbushes	-	Discovery Centre
Balingup	-	Village Green Forest Street
Mullalyup	-	Royal Gala Tour Office
Kirup	-	Transwa Bus Stop
Donnybrook	-	Transwa Bus Stop
Boyanup	-	Bus Stop (Hall)
Bunbury	-	Wollaston Train Station
Eaton	-	Bus Stop Eaton Shopping Ctr.

Phone Enquiries: 1300 233 556

Postal Address:

21003 South West Highway, Mullalyup WA 6252

Email: royalgatours@bigpond.com

Web: www.royalgatours.com.au

welcome...

2016 is the 10th Anniversary of Royal Gala Tours and we take great pleasure in presenting our brochure for 2016/2017. We would like to thank our fellow passengers for your wonderful patronage and look forward to welcoming you and many new passengers aboard during the coming year.

Regards, Peter Gubler, Manager and staff at Royal Gala Tours.



Discover and explore our own country regions, there are some beautiful and unique locations in the South-West that are well worth visiting. In this brochure we have included some new attractions and venues for your enjoyment.

Bunbury, the major city outside Perth is an ideal holiday location with a wide range of 5 star and Budget accommodation. Train and coach services to Bunbury operate daily from Perth giving visitors the opportunity to join Royal Gala Tours on one of their many day trips. Discover Bunbury attractions, Busselton, Margaret River, Collie, Boyup Brook, Donnybrook, Greenbushes, Bridgetown and the picturesque Ferguson Valley.

Our tours range from half day to fourteen days and cover many local attractions for you to explore.

All our tours are inclusive of :

An 18 seat Coaster and 46 seat luxury coach with easy access, comfortable reclining seats, restroom, video, heating and air conditioning and drinking water.

All entry fees, morning and afternoon teas are included, while some of our tours include lunch or a bring or buy your own lunch. This will be stated in your booking letter.

Prices are based on twin share accommodation for extended tours with single supplement also available.

Experienced owner driver and tour guide to ensure a pleasant journey.

Royal Gala Tours are proud of the accreditations and qualifications we hold as they demonstrate our ongoing commitment to the safety and financial security of our customers.

National Tourism Accreditation Australian tourism businesses are a nation wide network of businesses that have achieved recognition for the documentation of their system of business management. This indicates that we have achieved nation wide acclaim and are committed to a greater customer service and satisfaction.

Did you know that Royal Gala Tours are available to provide transport for weddings, functions and outings for your organization, club or group.

Our staff are available to plan your tour itineraries to suit your members.

We also provide Tour Vouchers for gift ideas for Christmas, birthdays and raffles.

Bunbury Day Tours

BUNBURY-MARGARET RIVER TOUR TASTE OF MARGARET RIVER

Every Tuesday & Saturday 8am

Cost \$110 per person (as of the 1st April 2016)

Includes: Lunch, entry fees, morning & afternoon tea

Depart along the Bussell Highway to Busselton. Extending 1.8 kilometres the heritage listed Busselton Jetty is the longest timber-piled jetty in the Southern Hemisphere. Jump on board the Jetty Train to the spectacular Underwater Observatory. Anniebrook Wine and Flower Emporium offer a variety of quality wines from the Margaret River region, silk flowers, and crafted giftware. Vass Virgin is a natural olive oil soap factory and hand blends a variety of luxurious natural body products. Experience the variety of extra virgin olive oils, exquisite olives and other delicious offerings. Sit back and enjoy a sumptuous meal at the historic Margaret River Hotel. Delight your taste buds at the Fudge Factory. Enter into a fascinating world of chocolate, with free chocolate tastings and viewing windows. Canal Rocks are an ancient and unusual rock formation, extending along the Geopraphe Coastline near Yallingup. In wild and stormy weather, massive waves smash against the rocks and churn through the canals. Enjoy Afternoon tea taking in the natural beauty before heading back to Bunbury.

BUNBURY MORNING TOUR

Every Wednesday Morning 8am

Cost \$65 per person (as of the 1st April 2016)

\$110 per person for both AM & PM Tours

Includes: Morning tea & entry fee

Join us at Royal Gala Tours and discover the history of Bunbury! Bunbury's resident population of Bottlenose Dolphins is eager to make your acquaintance at the Dolphin Discovery Centre in Koombana Bay, Australia's most ecologically aware dolphin experience.

Take in some local history at St Mark's Picton Church, the second oldest church in Western Australia. Travel back in time when we visit the Dardanup Heritage Park, hosting one of Australia's finest collections of heritage items, tractors and automobiles from our pioneering past. We return to Bunbury via the panoramic views of the city from Boulters Heights. Pickup at Bunbury Visitor Centre and selected Bunbury Hotels

BUNBURY AFTERNOON TOUR

Every Wednesday Afternoon 1pm

Cost \$65 per person (as of the 1st April 2016)

\$110 per person for both AM & PM Tours

Includes: Afternoon tea & entry fee

Journey along the Leschenault Estuary to view Historic Upton House and the Australind Church. The "Featured Wood Gallery Museum" showcases unique creative wood designs and displays of Australian, American Indian, U.S. Civil War Era and American West history. Experience bygone days at King Cottage built in 1880 for a glimpse of fashion, machinery, tools and furniture of that era. Travel through the outer suburbs of Bunbury and visit the "Maidens" before exploring Big Swamp Wildlife Park with the kangaroos, native birds and ducks. Your day concludes with a drive along the "back beach" for a panoramic view from Boulters Heights and the black and white checkered Bunbury Lighthouse.



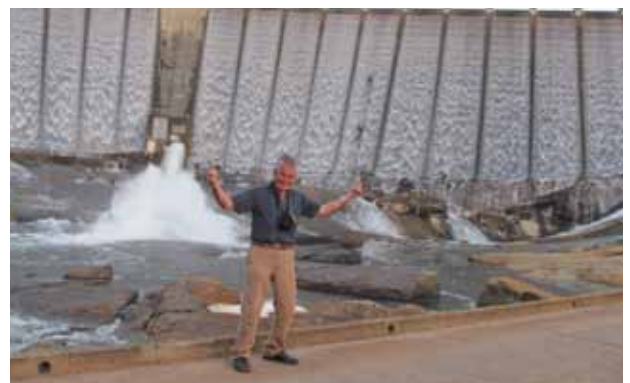
A LITTLE BIT OF COUNTRY HISTORY

Every Thursday 8am

Cost \$100 per person (as of the 1st of April 2016)

Includes: Lunch, entry fees, morning & afternoon tea

We discover a little bit of country history...Enjoy the panoramic views as we climb the Darling Ranges to discover the beauty of the Wellington National Park and Wellington Weir. Relive historical aspects of the Collie Mining Industry with the Men of the Coalmines. Take a trip down memory lane and waltz back in time to the tunes of the Nickelodeon at the Collie Museum. Travel east to delightful Boyup Brook, where there is absolutely something for everyone...Inspirational art sculptures, unique holograms, impressive beetle & butterfly display and of course the heart of country music. Visit the acclaimed Harvey Dickson's - country music centre with its Elvis and Johnny Cash record room, big blokes shed, rodeo, concert arena and much more before returning home to Bunbury via the scenic Preston Valley.



BUNBURY HINTERLAND

Departs Every Friday 8am
Cost \$100 per person (as of the 1st April 2016)

Includes: Lunch, entry fees, morning & afternoon tea

Join us at Royal Gala Tours, as we discover the 'Beyond' Bunbury... Travel the 'Golden Mile' straight to the core of the apple industry. Head to the very summit of the Darling Scarp – Experience the aspects of the mining and timber industry at the Greenbushes Discovery Centre. Continue on through the Blackwood River Valley to Bridgetown. Experience the magic of Balingup and enjoy the unique galleries, specialty shops of the main street. Delight your taste buds – sample the local produce and fine wines at Birdwood Park Winery. The magic continues as we travel through the countryside of Brookhampton, Preston Valley and into the delightful Ferguson Valley, to surprise the whimsical inhabitants of Gnomesville. Homeward bound, we travel the Ferguson Wine Loop, Wildbull Brewery and take in the breathtaking vista of the rich farmlands overlooking Bunbury.



Day Tours

'CASINO, WATERTOWN OR IKEA'

Cost \$45 per person

Transport, Crown or Watertown voucher

Monday 7th March 2016	Monday 11th April 2016
Monday 16th May 2016	Monday 13th June 2016
Monday 11th July 2016	Monday 8th August 2016
Monday 5th September 2016	Monday 10th October 2016
Monday 7th November 2016	Monday 5th December 2016
Monday 9th January 2017	Monday 6th February 2017
Monday 13th March 2017	Monday 10th April 2017
Monday 8th May 2017	

Enjoy a Day at the Casino including a \$10 fun pack voucher, buy factory direct at Watertown with a discount voucher, let your furnishing imagination run wild at IKEA or meet up with friends.

NEWSPAPER HOUSE

Wednesday 13th April 2016
Cost Adults \$100 per person
Seniors \$95 per person

Includes: Entry fees, morning & afternoon tea, lunch

Have you ever thought about how your newspaper is developed? Wonder no more on a guided tour of Newspaper House which has been in operation since the early 1900s and receive your free copy of the daily paper. Afterwards discover some of our beautiful Perth lakes which are a haven for many species of birdlife in and around the city.

BALINGUP SMALL FARM FIELD DAY

Saturday 23rd April 2016
Cost \$25 per person

Includes: Transport from Bunbury, pay your own entry

Celebrate the 25th Small Farm Field Day in the beautiful town of Balingup. This event attracts over 10,000 visitors and over 300 stalls. The Day encourages people from small cottage industries to exhibit and sell their produce. Stalls as well as information booths, fashion parade, various demonstrations and 'Speakers Tent' provide an opportunity to learn about a country lifestyle. Something for everyone. !

PERTH GARDEN FESTIVAL

Saturday 30th April 2016
Cost \$50 per person

Includes: Transport & morning tea, pay your own entry

Calling all green thumbs – or even just folks who wish they had one – the Perth Garden Festival will take place at McCallum Park, down by the banks of the Swan River. Highlights of the festival include cooking demonstrations from celebrity chefs, floral displays, gardening, masterclasses, the tree climbing championships, a garden-inspired fashion show and workshops for the little ones.

PERTH CRAFT AND QUILT FAIR

Wednesday 18th May and Friday 20th May 2016
Cost \$55 per person

Includes: Transport & entry

Have yourself in stitches or patch yourself up at this colourful exhibition. An inspirational day out for lovers of all crafts, whether expert or beginner. See amazing quilts and many other displays, join in workshops and be creative!



WINDY HARBOUR, NORTHCLIFFE, QUINNINUP

Tuesday 24th May 2016
Cost Adults \$100 per person,
Seniors \$95 per person

Includes: Entry fees, morning & afternoon tea, lunch

Marvel at the Karri Forests and explore the beauty of the small fishing village of Windy Harbour, gateway to the D'Entrecasteaux National Park. Lunch at the quaint hotel in Northcliffe, step back in time at the Northcliffe museum and visit the small timber town of Quinninup.

GHOST THE MUSICAL

Wednesday 25th May and Wednesday 1st June 2016

Afternoon Matinee

Cost Adult \$125 per person

Seniors \$105 per person

Includes: Transport & entry

GHOST is the story of Sam and Molly, a young couple whose relationship takes a shocking turn after Sam's untimely death. Featuring The Righteous Brothers' iconic song "Unchained Melody", and a love story made famous by Patrick Swayze and Demi Moore – GHOST The Musical is everything you love about the film and more. Experience the magic of this romantic love story live on stage.

REPTILES, EAGLES AND MARGARET RIVER

Saturday 11th June 2016

Cost Adults \$115, Seniors \$110

Includes: Entry fees, morning & afternoon tea, lunch

At Margaret River Silk Road you'll love the amazing array of mulberry and silk products including: - jams and syrup - mulberry teas - silk scarves, accessories and gifts. After lunch in a natural bushland setting you will see the largest collection of Eagles, Hawks, Falcons and Owls in Australia.

Eagles Heritage was established in 1987 out of a need to provide homes for permanently disabled birds of prey and owls. See magnificent birds at close quarters - put on a glove and have a bird of prey sit on your arm at a flight display. Come and see some of Western Australia's wonderful reptiles, from the friendly to the not so friendly. Reptiles are an integral part of Australia and the world, love them or loathe them our planet would not be the same without them. Conservation of our reptiles and their habitats is up to all of us humans.

DONNELLY RIVER, WOOD GALLERY AND TRAM

Saturday 2nd July 2016

Cost Adults \$145, Seniors \$140

Includes: Entries, morning & afternoon tea, buy or bring your own lunch

Enjoy morning tea in Pemberton Park. Appreciate unique wood craft salvaged from ancient long dead trees found on the forest floor at the Fine Woodcraft Gallery. Ride on the Pemberton Tram and relax as you meander through the tall trees. All aboard for a romantic cruise in the "Gigetta", down the Donnelly River. Take in the peace and tranquillity of this pristine environment, and walk on the beach to see the Southern Ocean.



CHRISTMAS IN JULY DWELLINGUP TRAIN

Friday 8th July 2016

Cost \$135 per person

Includes: Dinner, train & afternoon tea

Head into the Darling Scarp to Dwellingup. In 1961 the town was destroyed by fire. Step aboard a Steam Train and experience the magic of the forest. Once on board the Restaurant Train, complete with 1919 Vintage Dining Car and 1884 Club Car. Enjoy a five course meal in the dining car served from the "on board" wood stove, as our train meanders through the night forest which is softly floodlit from the train.

PERTH CRAFT & WOOD SHOW

Saturday 6th August 2016

Cost Adults \$50, Seniors \$45

Includes: Transport only

For men and women who love to get creative with their hands! Lots of bargains on tools and fabric to be found on the day! An inspirational day out for lovers of all crafts, whether expert or beginner. See amazing displays and join in workshops.

ELIZABETH QUAYS AND PERTH ZOO

Wednesday 17th August 2016

Cost Adults \$100, Seniors \$95

Includes: Transport, morning & afternoon tea, buy or bring your own lunch

Visit the New Elizabeth Quay, which features public art, a footbridge, boat moorings, ferry terminal, promenades and a nature-based playground on the new island. Elizabeth Quay was currently named The Esplanade and was developed in the 1870s to provide a site of active recreation for the inhabitants of the city. Catch the ferry across to South Perth Zoo, a 41-acre park that opened in 1898 and is home to 1258 animals of 164 species and includes an extensive botanical collection.

NANNUP GARDEN FESTIVAL

Saturday 20th August 2016

Cost Adults \$70, Seniors \$65

Includes: Transport, morning & afternoon tea, buy or bring your own lunch

Indulge in some Lewana Park Cheese tastings before heading off to Nannup, Aboriginal for "Rest A While" and the bustle of the Garden Festival with its array of exciting market stalls, entertainment and guest speakers. Tiptoe through the tulips at the Nannup Tulip Farm and enjoy a cup of tea among the native animals at Donnelly River.

DOWERIN FIELD DAY

Wednesday 24th August 2016

Cost Adults \$65, Seniors \$60

Includes: Transport, morning & afternoon tea, pay your own entry

Dowerin Field Day is one of the biggest annual machinery events in Western Australia. Displays include fashion, baking, craft, wine, small goods, tools, cars, bob cats, tractors, trucks and sheep shearing displays. All the fun at the fair and something for everyone.

BALINGUP MEDIEVAL CARNIVALE

Saturday 27th August 2016

Cost \$25 per person

Includes: Transport from Bunbury, pay your own entry

The Medieval Affayre is full of great fun, colour and fabulous costumes. Enjoy the Medieval fighting groups, Buxom Wenches, Jesters, Kings and Queens. Grand Parade at 1pm is the centrepiece of the event. Dress up and be part of the fray. Food Courts galore and market stalls, medieval dancing and singing. Dress up and step back in time.

ARALUEN TULIPS AND ZANTHORREA NURSERY

Saturday 27th August 2016

Cost Adults \$80, Seniors \$75

Includes: Entry fees, morning & afternoon tea, buy or bring your own lunch

Araluen Botanic Park is a unique world-class botanic park of great natural beauty and tranquillity. Every year volunteer's plant over 50,000 bulbs to create the stunning Tulip Festival at Araluen. Pack a picnic lunch and make a day of it before exploring the native nursery at Maida Vale, Zanthorrea we specialize in Australian natives, which are among the world's most lovely and hardy plants and choose from over 600 varieties of Australian plants. Plenty of room under the coach for purchases.

LEEWIN LIGHTHOUSE AND BLACKWOOD RIVER CRUISE

Saturday 10th September 2016

Cost Adults \$120, Seniors \$115

Includes: Entry fees, cruise, morning & afternoon tea, buy or bring your own lunch

Historic Cape Leeuwin Lighthouse is situated at the most south westerly tip of Australia, standing at the point where the Indian and Southern Oceans meet. Experience a cruise on the Blackwood River, the longest navigable river in Western Australia.

Discover amazing bird life while enjoying afternoon tea on board the Miss Flinders.

CRAFT AND PATCHWORK TOUR

Tuesday 13th September 2016

Cost \$80 per person

Includes: Lunch, morning & afternoon tea

A patchwork and quilters delight, Handcrafters House is the largest patchwork and quilting store in Perth, The store boasts over 3000 bolts of fabrics. Enjoy browsing amongst a vast array of fabrics, kits, tools, notions, books, haberdashery and more. After Lunch Indulge in more handcraft at "Carols of Midland" With magnificent examples of quilting, fanciful cushions and inspiring embroidery. The shop features 400 square metres of colour and design with bolts of fabrics and trims beautifully displayed in coordinated patterns and colours. Inspire your creative diva into action at one more craft shop in Mandurah before heading home.

KINGS PARK WILDFLOWERS

Saturday 24th September 2016

Cost \$50 per person

Includes: Morning tea, buy or bring your own lunch

Delight in the annual magical colour spectacle of Kings Park and buy wildflowers from the friends of King Park native plant sale. Take in the breathtaking views from the treetop walk and discover the water fountains and walk trails meandering through the park. Plenty of room under the coach for purchases.

PERTH ROYAL SHOW

Wednesday 28th September 2016

Cost \$45 per person, Under 12 \$25

Includes: Transport only

Thrills and spills at the Perth Agricultural Show. Check out the agricultural, animal and regional exhibitions Take a rest and enjoy the demonstrations in the central arena, wood chopping, and stock horse displays. For those wanting more excitement, thrills and spills, stroll through sideshow alley and take a hair raising ride. Spend time at the craft, produce and fashion pavilions and don't forget your show bags. Something for everyone!!

EXPLORE KOJONUP, WILDFLOWERS AND TRAIN

Wednesday 5th October 2016

Cost Adults \$100, Seniors \$95

Includes: Entry fees, morning & afternoon tea & lunch

Travel through the delightful town of Boyup Brook with its famous sand sculptures and holograms. Take in the magnificent display of Spider orchards on the way to Kojonup then enjoy morning tea at the Kodja Centre. Experience the journey of three women who settled in the district in the early years. Enjoy the rich history of Kojonup before heading out on a train through farmland to the natural wildflowers at Farrar Reserve.

PEMBERTON DISCOVERY

Saturday 15th October 2016

Cost Adults \$130, Seniors \$125

Includes: Entry fees, morning & afternoon tea, lunch

Driving straight through Pemberton is not an option, there are a plethora of experiences to enjoy and discover. Travel through the Yeagarup Dunes; the largest land locked Sand Dune System in the Southern Hemisphere, through giant sections of old growth Karri forest to the mouth of the Warren River in the Warren & D'Entrecasteaux National Park. Learn about the local wildflowers and explore the Pemberton Discovery Centre for gifts and souvenirs.

MYSTERY TOUR

Wednesday 19th October 2016

Cost Adults \$115, Seniors \$110

Includes: Entries, morning & afternoon tea and lunch

Hi Ho, Hi Ho, It's off to work we go

Join us on the exciting discovery

BRIDGETOWN GARDEN FESTIVAL

Saturday 5th November 2016
Cost Adults \$90, Seniors \$85

Includes: Transport from Bunbury, garden entry, morning & afternoon tea, buy or bring your own lunch

Welcome in the spring in Bridgetown, known throughout the South West as the Garden Town. Visit stunning gardens and exciting market stalls.

PENGUIN ISLAND AND KWINANA GRAIN TERMINAL

Friday 25th November 2016
Cost Adults \$120, Seniors \$115

Includes: Morning & afternoon tea & lunch

A five minute ferry ride across beautiful Shoalwater Bay in Rockingham, Penguin Island is one of Western Australia's favourite day trip destinations. The star attraction is the little penguin, the smallest species in the world which will entertain you with their feeding antics. The island and Marine Park abounds with other wildlife including wild dolphins, sea lions, stingrays, pelicans, king skinks and over 50 species of sea birds. The Kwinana Grain Terminal is Western Australia's primary grain export facility, shipping more than half of the state's export grain and with a total storage capacity of more than one million

tonnes. Visit the Granary Museum and Kwinana Beach where the wreck of the SS Kwinana has been cut down and filled to form a jetty.



GALLERIA SHOPPING SPREE

Wednesday 30th November 2016
Cost \$55 per person

Includes: Morning & afternoon tea, buy or bring your own lunch

Shop till you drop at Galleria Shopping Centre northeast of Perth's central business district. The Galleria is the fourth largest shopping centre in Western Australia. It contains a Myer, Target Australia, Kmart Australia, Coles and 4 Cinemas and over 227 shops, as well as many other small boutiques alongside the Galleria

PATRONS CHRISTMAS GET TOGETHER

Sunday 11th December 2016
Cost \$65 per person

Includes: Lunch, entertainment & 2 drink vouchers

Royal Gala Tours is celebrating 10 years since its inception. Renew old acquaintances; make new friends and farewell 2016. Singing, Entertainment and Good Cheer. Prize for the best Christmas joke or skit.

MANDURAH CHRISTMAS LIGHTS

Thursday 15th December 2016
Cost Adults \$95, Children \$65

Includes: Cruise & 3 course dinner

Start your festive season off. Enjoy a 3 course meal at Cicerello's before embarking on a tour of the canals. Marvel at the extraordinary mass of lights that adorn the Mandurah Canals at this time of the year. This popular cruise sells fast! Book your seat early!

WALPOLE WOW CRUISE AND TREETOP WALK

Saturday 21st January 2017
Cost Adults \$115, Seniors \$110

Includes: Cruise, entries, morning & afternoon tea, buy or bring your own lunch

Delight in the magnificent Karri Forests to Walpole. All aboard for an informative eco cruise on the Walpole Inlet with Gary Muir. View the Southern Ocean and enjoy a delicious morning tea before venturing into the main street of Walpole for lunch. Explore the famous treetop walk up among the Karri canopy. Relax with afternoon tea at Shannon rest area.

AUSTRALIA DAY FIREWORKS - BUNBURY

Thursday 26th January 2017
Cost \$25 per person

Includes: Transport from Manjimup - Donnybrook

Finish your Australia Day off with a bang! Celebrate with a picnic, dine out, or join friends at the foreshore in Bunbury to watch the amazing fireworks.

COLLIE WATERWAYS AND WOOD GALLERY

Saturday 28th January 2017
Cost Adults \$120, Seniors \$115

Includes: Entry fees, morning & afternoon tea, lunch

There are over a 100 dolphins living in Koombana Bay which regularly visit the shallow waters in front of the Centre. You will be blown away by the 360° Digital Dolphinarium, where the Dolphins swim around you while you watch in amazement (and the best part is you won't get wet!) All aboard the Three Water Cruises for a cruise up the Collie River and morning tea. Back on dry land we make our way to Saint Nicolas church and Henton Cottage (originally 'The Prince of Wales Hotel'), an interesting reminder of Australind's early days. The Featured Wood Gallery is our final destination for the day, view some fascinating woodwork and learn about Indigenous and Indian Culture and war history. Enjoy afternoon tea.



BOYUP BROOK COUNTRY MUSIC FESTIVAL

Saturday 18th February 2017

Cost Adults \$60, Seniors \$55

Includes: Entries, transport, buy or bring your own lunch

The Boyup Brook Country Music Festival is set to be bigger and better than ever before. This fantastic event in Boyup Brook showcases the amazing talent of WA. The Street Carnival is full of amazing buskers, great stalls and delicious food vendors, ute and truck Muster and enjoy the street parade. After Lunch head out to explore the teapot house.

MYSTERY TOUR

Sunday 19th February 2017

Cost Adults \$100, Seniors \$95

Includes: Entry fees, morning & afternoon tea, lunch

“She sells sea shells on the sea shore”

Take me back to the Black Hills

Timber, Timber down where the tall trees grow.

PEEL ZOO AND DWELLINGUP TRAIN

Saturday 25th February 2017

Cost Adults \$125, Seniors \$120

Includes: Entry fees, morning & afternoon tea, lunch

Visit the Peel Zoo and get up close and personal with native Australian wildlife like koalas and meet an endangered Tasmanian devil. Peel Zoo is a boutique, hands-on Wildlife Park where you can not only view over 100 species of birds and animals, You'll also get to hand feed the animals, hold a snake, pat a fox, tickle a ferret and so much more - A unique experience you won't find anywhere else!. Set against a lush setting on the banks of the Murray River.

Explore Dwellingup a town destroyed by fire in the 1960s and now a thriving community. Lunch in the beautiful town of Dwellingup. Relive the story at the Visitors Centre and learn about the history of the region in its heyday. All aboard the Dwellingup Forrest Train Emilyn” and travel through the Jarrah forests of the Darling Scarp.



WAGIN WOOLARAMA

Saturday 11th March 2017

Cost Adults \$55, Seniors \$50

Includes: Transport only

Over 350 commercial exhibitors; over 1000 sheep, cattle, horses and chooks, working sheep dogs, hourly fashion parades, art, photography and craft. Delight in the side shows, free entertainment, lifestyle displays, wool handling and shearing competitions. All this activity will make this an exciting day.

KATANNING DISCOVERY

Tuesday 28th March 2017

Cost Adults \$105, Seniors \$100

Includes: Entry fees, morning & afternoon tea, lunch

Katanning is WA's biggest sheep selling centre yards take a tour of the new state of the art complex. The \$25 million project was financed from the sale of the old Midland saleyards together with some Federal Government funding. Take a tour of this amazing facility on a working day. After lunch discover historical Katanning, Kobeelya School, The Old Flour Mill and Museum.



BALINGUP SMALL FARM FIELD DAY

Saturday 22nd April 2017

Cost \$25 per person

Includes: Transport from Bunbury

Celebrate the 25th Small Farm Field Day in the beautiful town of Balingup. This event attracts over 10,000 visitors and over 300 stalls. The Day encourages people from small cottage industries to exhibit and sell their produce. Stalls as well as information booths, fashion parade, various demonstrations and ‘Speakers Tent’ provide an opportunity to learn about a country lifestyle. Something for everyone. !

FREMANTLE PRISON, CRUISE AND TOUR OF PERTH

Friday 28th April 2017

Cost Adults \$140, Seniors \$135

Includes: Entry fees, morning & afternoon tea, lunch

Fremantle Prison is one of Western Australia's most fascinating and significant historical attractions. The history of Fremantle Prison dates back to the early beginnings of Western Australia. Decommissioned as a maximum-security goal in 1991, the Prison was continuously used as a place of incarceration for almost 140 years. With death row, solitary cells and gallows, it is a monument to a system of punishment that is uncomfortably recent. Sit back and relax with lunch on board a Captain Cook Lunch Cruise. Tour Perth on a double decker bus and enjoy the views of Kings Park before starting our journey home.



Extended Tours

All Royal Gala Tours extended tours are inclusive of motel accommodation, morning and afternoon tea, dinner and breakfast.

Lunches as per itinerary.

The hostess will provide a detailed commentary of the region travelled and help with all passenger needs.

GOLDEN CIRCLE KALGOORLIE, ESPERANCE, ALBANY

Tuesday 3rd May - Sunday 8th May 2016

6 Days, 5 Nights

Cost Adults \$1600, Seniors \$1550, S/S \$430

Includes: Accommodation, entries, morning & afternoon tea, lunch, breakfast & dinners, buy your own lunch on two days.

Day 1 Home – Merredin (L/D)

Setting out through the Wheatland's to Williams, visit the wool shop before travelling through the small towns of Corrigin and Bruce Rock. Stop off to view the largest wind farm in the Shire of Merredin which houses 111 wind turbines. Each turbine measures 130m in total height, and the farm will generate 267 megawatts of power, enough electricity to power 160,000 households and will save 1.1 million tonnes of greenhouse gasses. Overnight in Merredin.

Day 2 Merredin – Kalgoorlie (B/L/D)

Merredin is the largest regional centre in the Eastern Wheatbelt and has a population of around 3000. Start with an early morning tour of Merredin. Discover stories of the Golden Pipeline and visit the Military Museum to discover the role Merredin played during the war years.

We make our way through Mukinbudin to Bullfinch, which played a part in the goldmining era of the 1890s. In 1908 it was named Bullfinch after the large number of bird species found in the area. Through Southern Cross and on to Kerrilee Water Flume, an amazing water hole originally one of Hunts wells and then a watering point for the workers on the Kalgoorlie pipeline and the trains. Overnight in Kalgoorlie.

Day 3 Kalgoorlie (B/D)

Experience the exciting days of the early gold rush, when men risked their lives to make their fortune in Kalgoorlie. Visit the Super Pit and Mt Charlotte reservoir where the Golden Pipeline delivers its lifesaving water. View beautiful Hammond Park with its bird aviaries and wildlife. The Royal Flying Doctor Service began as the dream of the Rev John Flynn, a minister with the Presbyterian Church. He witnessed the daily struggle of pioneers living in remote areas. Over the next few years, the RFDS began to expand across the country. The Western Australian Section was officially registered on June 14, 1936. Take a tour of this amazing facility. In Hay Street we visit Questa Casa Bordello and discover the history of "the ladies of the night". Overnight in Kalgoorlie.

Day 4 Kalgoorlie – Esperance (B/L/D)

Depart through Boulder to Hannan's Lake, named after the famous Paddy Hannan who found the gold in Kalgoorlie in 1889, pass through the mining town of Kambalda to Lake Lefroy, a stunning salt lake standing out from its surrounds due to its pure white illuminating colour and extreme lack of vegetation. It is a large salt pan that rarely contains water. Venture to the Red Hill Lookout for magnificent views of the dry lake and marvel in its vastness. The sun reflects off the salt often causing a mirage. Travel on through the small towns of Salmon gums and Grass Patch and onto Esperance. Overnight in Esperance.



Day 5 Esperance – Albany (B/L/D)

French explorers are credited with making the first landfall near the present day town of Esperance, naming it and other local landmarks whilst sheltering from a storm in this area in 1792. The town itself was named after a French ship, the Esperance commanded by Antoine Bruni d'Entrecasteaux. Esperance is French for 'hope'. Recherche Archipelago is a group of 105 islands, and over 1200 "obstacles to shipping", the islands stretch 230 km from East to West and to 50km off-shore. The western group is near Esperance and the eastern group at Israelite Bay. The Shire has an area of 44,336 square kilometres, giving the region one of the lowest population densities to be found anywhere. It includes over 400 kilometres of coastline, ranging from gently undulating bays and the picturesque islands of the Recherche Archipelago to the spectacular cliffs of the Great Australian Bight. The colour of Pink Lake is attributed to high concentrations of salt tolerant algae, Dunalella Sailina. This was first definitely established in 1980 after almost 200 years of conjecture. The salt from Pink Lake is 99.9% pure used to be harvested for W.A. Salt Supply and sent to Fremantle for processing. Jerramungup is an Aboriginal name meaning 'Place of the tall Yate Trees'. Today it produces sheep, wool, cattle and grains. Overnight at Albany

Day 6 Albany – Home (B/L)

Depart on a Kalgan River Cruise with captain Kalgan. Sail across the sheltered waters of Oyster Harbour and the Ancient Kalgan River, bringing you closer to nature. Meet the Pelicans, see wildlife, giant sting rays and find out more about Albany and its history in 4 hours than some who have lived here all their life! What's under the boat? Have a look through the glass bottom and see. Indulge in some gourmet shopping as you travel homeward.

PILBARA BROOME DISCOVERY TOUR

Wednesday 20th July - Tuesday 2nd August 2016

14 Days, 13 Nights

Cost Adults \$3955, Seniors \$3920, S/S \$1045

Includes: Accommodation, breakfast, dinners and morning & afternoon teas, buy your own lunch on two days

Day 1 Home – Geraldton (L/D)

Head north on the Great Indian Ocean Drive and take in magnificent scenery. Get a firsthand look into the regions multimillion dollar lobster industry by taking a tour of the LIVE lobster processing plant at the Indian Ocean Rock Lobster Factory and indulge in a seafood lunch. Onward North to Geraldton for a sunset tour of the HMAS lookout, a memorial to 645 young Australian Sailors who lost their lives when the HMAS Sydney II sank. When the HMAS Sydney II was built, she was the pride of the Royal Australian Navy fleet and named after Sydney, the capital city of New South Wales. Relax at the Ibis All Seasons Motel.

Day 2 Geraldton – Carnarvon (B/L/D)

Depart via historic Northampton and Port Gregory once a convict hiring Depot. The rich history of Murchison House has been shaped by the hands of pioneering battlers, wealthy wool merchants and even an Indian Prince! It is one of the oldest and largest properties in W.A. and is a family owned and operated business. Murchison House Station was founded in 1858 by Charles von Bibra to provide meat and wheat to lead miners at Galena, near Geraldton, beef to the growing Perth market and remount horses to the British army in India. Kalbarri National Park is a photographer's delight at the Graham Ross lookout. On the road again to Carnarvon, the town was founded in 1883, initially as a port and supply centre for the surrounding regions. It is named after Henry Herbert, 4th Earl of Carnarvon, a past Secretary of State for the Colonies. Enjoy a good night's rest at the Gateway Motel.

Day 3 Carnarvon – Exmouth (B/L/D)

Travelling the North West Coastal highway to Coral Bay take a glass bottom boat tour over the beautiful coral formations found in the lagoon gardens of the inner reef viewing the wonderful fish and coral formations and an informative talk without having to get in the water. On the highway once again to Exmouth. The first documented European landing on the Ningaloo Coast was made by the Dutch Captain Williem Janz of the Mauritius in 1618 near the tip of what is now known as North West Cape. Australian Captain Phillip Parker King later visited in 1818, and named Exmouth Gulf in honour of his hero, Viscount Exmouth, formerly Sir Edward Pellew. Pearlers and Pastoralists moved into the area in 1942, during World War II, the US Navy established a submarine base under the code name Operation Potshot. Overnight at the Pot Shot Motel

Day 4 Exmouth – Karratha (B/L/D)

Setting off Bright and early with 600kilometres to cover, enjoy a relaxing lunch by the Fortescue River the third longest river in the state. The river rises near Deadman Hill in the Ophthalmia Range near Newman and flows through the 960 square kilometres and discharges into the Indian Ocean at Mardie Station about 40 km south-west of Dampier. The river was named in 1861 during an expedition by the explorer and surveyor Francis Thomas Gregory, after Chichester Fortescue who was the Parliamentary Under-Secretary of State for the Colonies. The traditional owners of the area that the river flows through are the Indjibandi peoples. Karratha city adjoins the port of Dampier and was established in 1968 to accommodate the processing and exportation workforce of the Hamersley Iron mining company and in the 1980s, the petroleum and liquefied natural gas operations of the North West Shelf Venture. The city's name comes from the cattle station from which land was reclaimed for the development. Karratha in the local Aboriginal language means 'good country' or 'soft earth'. Overnight at Cherratta Lodge Karratha



Day 5 Karratha – Port Hedland (B/L/D)

Explore Cape Lambert and Cossack which is now an historic ghost town. In May 1863, Walter Padbury landed his stock at the mouth of the Harding River near the present site of Cossack which was first known as Tien Tsin Harbour, after the barque that carried Padbury and his party. The ship that brought the state's Governor, Frederick Weld in December 1871 was named HMS Cossack and the town adopted this name in 1872. Fishing is the main industry in Port Samson and from 1938 to 1966 blue asbestos or crocidolite was carried here by rail from Wittenoom. At its peak, the town supported two hotels, a blacksmith, a police station and a horse track. Overnight at Hospitality Inn Port Hedland.

Day 6 Port Hedland (B/L/D)

Port Hedland is known by the Indigenous Kariyarra and Nyamal people as Marapikurrinya, which means "place of good water" This landlocked area is now the turning basin for the ships that enter the port and is the world's largest bulk tonnage export port, exporting 372.3 million tonnes per annum and contributes 14% or \$4 billion to the Pilbara's Gross Income and is a melting pot of over an estimated 72 nationalities and cultures. Though the coastline in the area had been explored in the 18th century, Captain Peter Hedland was one of the first Europeans to explore the harbour for the purpose of developing an export port. Welcome to Roebuck Bay Broome. It is named after HMS Roebuck, the ship captained by William Dampier when he explored the coast of north-western Australia in 1699. Mercure Motel in Broome.

Day 7 Discover Broome (B/D)

Visit Gantheaume Point and check out a historic lighthouse built in 1906, marvel at the prehistoric dinosaur footprints etched into the rocks on the beach over 130 million years ago. Anastasia's Pool was created amongst the rocks by the former lighthouse keeper for his wife who suffered from arthritis and believed the salt water which filled the pool at high tide had possible healing properties. It is often said that Broome's pearling industry is as rich in culture as it is in pearls. Experience a fascinating insight to Broome's unique heritage at the pearling museum, learn about the perils of the deep and discover firsthand what made the pearl divers life so hazardous and what drove so many to put their lives at risk. Discover Reddell's Beach with the stark contrasts of red pindan bordering the white sandy beach. Examine the unusual rock formations with their intricate erosion patterns. Deep Water Port is Broome's water link to the world. Built to replace the old jetty near Town Beach, this massive structure can accommodate large cargo and cruise ships at any tide (which can run 10 metres!) Enjoy free time at Streeters Jetty and Shop in Chinatown before embarking on an afternoon Camel Ride and swim on Cable beach. It offers a sense of adventure as the "ships of the desert" sway up the sand in a long line.

Day 8 Broome - Derby (B/L/D)

Derby, located on the mouth of the Fitzroy River in the Kimberley was gazetted in 1883. It is named after Edward Stanley, Lord Derby, Secretary of State for Colonies. The town was established to service the growing Kimberley cattle industry and grew rapidly after the discovery of gold in the Kimberley in 1885. It is well known for its low and high tide reaching 11.8 metres and gateway to the renowned Gibb River Road, built for the station owners to transport cattle to abattoirs in Derby, Broome and Wyndham. During World War II, Derby was bombed by Japanese planes because of an air base and jetty that was used by Australian forces. Photograph the famous Boab Prison Tree, tour the Flying Doctor and School of the air base before departing back to Broome.

Day 9 Broome (B/L/D)

Willie Creek Pearl Farm will reveal the intricate processes of today's modern cultured pearling industry - discover how oysters are seeded to grow pearls, see how they are cared for and learn about the virtues used to value these lustrous gems. There is a unique opportunity to purchase the very pearl harvested before your eyes. View Barramundi and a range of other sea creatures in our aquaculture display. Enter another world through the Jaws of a giant at the Crocodile Park, take a guided tour and watch these huge reptiles being fed. Established over forty years enjoy the beautiful birds, animals and gift shop at Malcom Douglas's wildlife park. Overnight Broome



Day 10 Broome - Port Hedland (B/L/D)

Farewell to Broome, as we head down South to Port Hedland, discovering eighty Mile Beach, Sandfire Roadhouse and the De Grey River, named in 1861 by the explorer and surveyor Francis Gregory after Thomas de Grey, 2nd Earl de Grey who was, at the time, President of the Royal Geographical Society. Welcome back to Port Hedland Motel.



Day 11 Port Hedland - Newman (B/L/D)

The Yule River was named in 1861 by the surveyor and explorer Francis Gregory while on expedition in the area, after Thomas Newte Yule. Lunch at Fortescue Falls and explore the Karijini National Park including Circular Pool, Kalamina Gorge and Joffre Falls. Newman sits on what was originally regarded as marginal cattle country. It was built in the 1960s by the Mount Newman Mining Company following the discovery of rich iron deposits on nearby Mount Whaleback. The discovery marked the start of the resource boom in Western Australia in the 1970s. The town takes its name from nearby Mount Newman, named in honour of A.W. Newman, an early explorer who died of typhoid fever just before reaching the area in 1896. Overnight at Mt Newman Motel.

Day 12 Mt Newman - Meekatharra (B/L/D)

Take a tour of Mt Newman Iron Ore Mine before setting off along the Great Northern Highway. Collier Range National Park is the home of the rare Pilbara Pebble-Mound Mouse. "25 Mile well" on the Great Northern Highway has been restored as a monument to the many drovers and stockmen driving their charges through this rugged land. Meekatharra is a former gold rush town. The first settlement occurred in 1894. It is an Aboriginal name meaning 'place of little water' and is an area known to the Yamatji Aboriginal people. Meekatharra is a major supply centre for the pastoral and mining area and is a centre for sheep and cattle transshipment, initially by rail but now by road trains. It is also a base for the Royal Flying Doctor Service and School of the Air. Just 3km from Meekatharra is a fascinating area of granite rock formations. Its reputation for picnics dates back to World War I when Meekatharra's service men were welcomed home with a gala picnic and sports day at the granites. Since that day, the area has been known as Peace Gorge. Overnight at the Auski Motel

Day 13 Meekatharra – Dalwallinu (B/L/D)

Off bright and early through the small communities of Nannine, Tuckanarra and Nallan to Cue. Gold was discovered in 1892 and the town was named after an early prospector Tom Cue. The town of Day Dawn, 8 km south, was established within a year; by 1900 a hospital and cemetery were established between the two towns. Lake Austin and the town are both named after surveyor Robert Austin, who was the first European to explore and chart the area in 1895. Mount Magnet is an old gold rush town. The name was chosen during exploration of the region due to an isolated hill 5 km North West of the town which had an extremely high iron content and affected the compasses of explorers. Paynes Find was named after the prospector, Thomas Payne, who was the first to discover gold in the area. Our final Destination for the day is Dalwallinu a Wheatbelt town on the world-famous Western Australian Wildflower Route. The name of the town comes from the Aboriginal word that means “place to wait a while” or “goodlands”. “Wait a While in the goodlands” at the Dalwallinu Motel



Day 14 Dalwallinu – Home (B/L)

Pack up your troubles in your old kit bag as we make our way home through Wongan Hills, a wheat belt town settled in the 1900s, and named after. “kwongan”, an indigenous word for sand plain, In 1925 an agricultural research station was established about 5 km north of the town which assisted in the diversification and improvements in farm practices through the state. The area is a prosperous agricultural region with activities focused on sheep, grain and pig-farming. Enter the Avon Valley through the ballooning Town of Northam first explored in 1830 It was named by Governor Stirling, probably after a village of the same name in Devon, England and became a point of departure for explorers and settlers who were interested in the lands which lay to the east. The arrival of the railway made Northam the major departure point for fossickers and miners who headed east towards the goldfields. Welcome home to the South West for our last afternoon tea at Pinjarra. We hope you have enjoyed your Tour.



WILDFLOWER WONDER

Monday 29th August - Thursday 1st September 2016
4 Days, 3 Nights

Cost Adults \$1140, Seniors \$1120, S/S \$180

Includes: Accommodation, morning & afternoon tea, dinner, breakfast, entries, BYO 1 lunch

Day 1 Home – Dalwallinu (L/D)

Enjoy morning tea in the beautiful Darling Scarp at Lake Moyanup before heading north to Bindoon the gateway to the wildflowers. George Fletcher Moore opened up the area in 1941 and it is aboriginal for “Place where the wild yams grow”. With a local guide we will discover the beauty of Blackboy Ridge and the many species of wildflowers growing in the area. The majority of training and selection for the Australian Special Air Service Regiment takes place at Bindoon and it is home to Bindoon Agricultural College. Travelling further north along the old road once used by the Benedictine Monks we reach the Spanish Town of New Norcia. Take time to appreciate the beautiful collection of Art Work in the New Norcia Museum. Overnight at Dalwallinu



Day 2 Dalwallinu – Geraldton (B/L/D)

Dalwallinu is the first town along the Wildflower Way, a route that showcases beautiful outback wildflowers. Dalwallinu and Wubin are sheep and wheat farming towns in our Wheatbelt region. Perenjori on the wildflower trail derives its name from the Aboriginal word “Perangery”, meaning water hole. Perenjori is a town on the move, its industries include, sheep, grain, wildflowers and mining. Morawa is known as the Heart of the Wildflowers for a very good reason as it is one of the most prolific areas for native flowering plants. Many species of flowers are unique to this district along with carpets of everlastings; the most unique and distinctive is the Wreath Flower (*Leschenaultia macrantha*). Coalseam is a well-known geological site where the first coal deposits in Western Australia were discovered by the Gregory Brothers in 1846. Wildflowers of all varieties are in abundance with carpets of pink, gold, cream and white everlastings transforming the usually sparse understorey of wattle scrub during the wildflower season. Passing through Mullewa, Tenindewa, Ambania, Bringo and Moonyoonooka we make our way to Geraldton for an afternoon view of the city from HMAS Lookout. Overnight Geraldton

Day 3 Geraldton – Cervantes (B/L/D)

Departing Geraldton we make our way through to Greenough. The Old Farm is a collection of Historical buildings and is described as a “Village Frozen in Time” it was established in the 1800s. See the leaning trees forced to bend due to extreme winds. Western Flora, north of Eneabba, is a gardener’s delight during the wildflower season when more than 300 varieties of stunning flowering plants can be viewed on the property and more than 2000 varieties within 40 km of the park. Join Ron on a fascinating tour into the insight of how these plants are pollinated and how they survive over generations. Discover insect’s small enough to fit several on a pin head and view them through a microscope. Lesueur National Park has a variety of “wildflowers which come in diverse shapes, sizes, and colours: red, orange, pink, yellow, purple, green, and white. The park was named after Charles-Alexandre Lesueur, a natural history artist aboard the Naturaliste on Hamelin’s 1801 expedition. Lesueur National Park covers 26,987 hectares. More than 800 plant species have been identified, making it one of the richest sites for plant species in the world. Nine of these are found nowhere else in the world while 81 are at their most northern or southern limits, providing unique plant communities. Overnight Cervantes



Day 4 Cervantes – Home (B/L)

The Pinnacles Desert covers an area of 190 hectares and contains thousands of limestone Pinnacles, some up to 5 meters high. The constantly shifting sand dunes creates an eerie landscape of ever changing moods often viewed at its best at dawn or sunset when the shadows create remarkable patterns and shapes that ripple over the sands. The lobster processing factory offers the complete lobster experience from lobster pot to cooking pot and provides a close up encounter with the most valued single species fishery in Australia; the Western Rock Lobster. Watch how they are brought in from the ocean processed in the factory and packaged up to be sent Live to destinations all over the world. Purchase your own fresh seafood box from the factory. Our last wildflower experience is with Mrs Rhonda Tonkin, proprietor of Western Wildflower Farm in Moora. Rhonda has worked tirelessly within the wildflower industry for 32 years and exports wildflowers to 11 different countries. A large portion of the Tonkin family farm is dedicated to cultivating wildflowers. Take time for an informed talk and purchase some gifts from this magnificent gift shop. Welcome home to the South West, we hope you have enjoyed your wildflower encounter.

KULIN BUSH RACES AND WAVE ROCK

Friday 30th September - Sunday 2nd October 2016

3 Days, 2 Nights

Cost Adults \$780, Seniors \$765, S/S \$80

Includes: Morning & afternoon teas, accommodation, lunch, dinner, breakfast, BYO 1 lunch

Day 1 Home – Hyden (L/D)

Making our way through Williams and explore the Woolshed” take the opportunity to shop. In Wickepin experience the life of Albert Facey, author of “A fortunate life”. Wickepin was formed in 1909 as a service centre for broadacre grain and sheep farming in the area. The shire covers an area of 198,900 hectares and includes the towns of Wickepin, Yealering, Harrismith and Tincurrin with a combined population of approximately 720 people. Travel along the Tin Horse Highway to the town of Kulin. Explore the markets and entertainment at the race track before heading off to Hyden. Discover the legends at Mulka’s Cave. Mulka was the illegitimate child of a forbidden love. The illegal union cursed the child and even though he was healthy, large and strong, he was born cross-eyed making him a crappy hunter, this is not so good if you’re a hunter-gatherer. Not being able to hunt well he eventually resorted to eating human children. Hippos Yawn and the Humps have a number of large granite rock formations and are located near Wave Rock. Overnight at Hyden Motel

Day 2 Hyden – Kulin (B/D)

Take a guided tour of one of Australia’s most famous landforms. This huge giant surf wave of multi coloured granite feels like it’s about to crash onto the bush below. Stand under it and feel rock power from over 2,700 million years ago, before dinosaurs roamed the earth. A guided tour will give you an insight of how the landscape was formed. Other features around Wave Rock are the Lace and Wildflower shop, Wildlife Park and an enormous collection of thousands of miniature toy soldiers. Travel back to Kulin and place your bets at the award winning Kulin Bush Races. Much more than a day at the races, with novelty events, entertainment, live bands and delicious country style food. It is a family orientated event. Overnight at Hyden Motel.

Day 3 Hyden – Home (B/L)

Located 70 kilometres east of Kulin, Buckley’s Breakaway is a picturesque land form where erosion has cut through the orange laterite and formed spectacular white cliffs and gullies from the underlying clay. The gully is dominated by Cypress Pine, Blue Mallet and Box Poison, but it is the top of the “breakaway” which carries the most interesting plants. The natural garden has something in flower all year round. The Lake Grace Australian Inland Mission hospital is the only one in Western Australia and one of only three remaining in Australia. Experience this early twentieth century rural hospital that, in its time, serviced approximately 16,000 km2. The Lake Grace Aim Hospital Museum contains the old-style wards, duty room, kitchen and laundry. Step back in time at the Wagin Pioneer Village. Take a siesta as we make our way home via Collie.

NARROGIN, BARNA MIA, WONGAN HILLS, YORK, NORTHAM AND TOODYAY

Thursday 27th October - Sunday 30th October 2016
4 Days, 3 Nights

Cost Adults \$990, Seniors \$975, S/S \$240

Includes: Entries, morning & afternoon tea, lunch & buy your own lunch

Day 1 Home – Narrogin

Learn about the rail system in Collie at the renovated Railway Museum before taking launch at Jesse Martins Pioneer Village, dating from the 1900s Jesse has replicated an old hotel, picture theatre and store as well as displaying old farm machinery, cars and trucks. Enjoy an early dinner before departing for Barna Mia, Aboriginal for “animal home”. Located in the heart of Dryandra Woodland this sanctuary has been constructed to provide visitors the opportunity to view, at close range, a number of endangered marsupials. On a guided nocturnal tour discover bilbies, wallabies, woylies, boodies and bandicoots up close as they scuttle over your feet. Overnight Narrogin



Day 2 Narrogin –Northam (B/L/D)

Passing through the towns of Popyanyinning, a small town in the Wheatbelt between Pingelly and Narrogin. The name means “water hole” in the local Noongar Aboriginal language and was first recorded in a survey in 1869 for a pool in the Hotham River. The first pioneers arrived in 1893, mainly railway construction workers and their families, and the town became one of the original sidings on the Great Southern Railway. The Beverley Aeronautical Museum situated in the centre of the town is a tribute to the aviators of Western Australia. The history of some of the highpoints of aviation in this State are depicted in photographs around the walls of the museum with more information in printed form. View the “Flying Plank” glider, a life size replica of the “Flying Flea” and the “Grasshopper” Take time to explore historic York before arriving at Northam Motel.



Day 3 Wongan Hills – New Norcia – Northam (B/L/D)

Passing through the small wheat belt town of Goomalling, prominent for a spring found by explorers Hillman and Lefroy in 1846. It was gazetted in 1903 and is an Aboriginal word which means “the place of the silver-grey possum”. Goomal is the noongar word for this possum. Check out the Verticordia at Reynoldson Reserve then travel along the historic route taken by the Benedictine monks to New Norcia. Take a guided tour around the beautiful Spanish designed village before returning to the Northam Motel.



Day 4 Northam – Home (B/BYO LUNCH)

If you are looking for that special piece for your garden then look no further than at the Toodyay Emporium, something for everyone. Free time in historic Toodyay steeped in Moondyne Joe history. Be early



and purchase your Christmas decorations at the largest Christmas store where it's Christmas all year round.

There are thousands of gifts, decorations, collectables, trees, trimmings and more to suit every style and every budget, including the ever-popular Lemax Christmas Village Miniatures. Our store is bursting with stock.

Defy gravity at the Gin Gin Gravity Centre, learn about black holes, magnetic fields and forces and climb the leaning tower. Enjoy our last afternoon tea at Pinjarra.

MYSTERY TOUR

Monday 14th November -

Wednesday 16th November 2016

3 Days, 2 Nights

Cost Adults \$850, Seniors \$835, S/S \$136

Includes: Accommodation, breakfast, dinners, morning & afternoon teas, BYO lunch on two days.

“ Didn't we have a lovely time, the day we went on tour, A beautiful day we had lunch on the way and all for under a pound, and on the way back we chatted with Pete and we opened a bottle of cider, singing a few of our favourite tunes as the wheels went round. Trust Royal Gala Tours to give you an exciting 3 days holiday.

WAVE ROCK & ESPERANCE – ALBANY DISCOVERY

Friday 26th May - Wednesday 31st May 2017

6 Days, 5 Nights

Cost Adults \$1680, Seniors \$1650, S/S \$350

Includes: Accommodation, morning & afternoon tea, entry fees & lunches

Day 1 Bunbury – Hyden (L/D)

Travel through the Darling Scarp to Wagin home of the Giant Ram. Continue on to Hyden to visit Wave Rock. Formed before the age of dinosaurs, it is one of the oldest rocks in the world. Wave Rock is an ancient granite formation that has been exposed to weathering processes for over 60 million years. Its wave shape is the result of wind and water erosion over thousands of years which have cut the base and left the overhang, making it look like a giant wave. Photograph Hippos Yawn. Aboriginal people were the first humans who lived in the area and painted hand marks can still be seen on rocks at the Humps and Wave Rock. The 19th century sandalwood cutters were the first white settlers in the area. Visit Mulka's cave where handprints can be found on the cave walls. Overnight in Hyden

Day 2 Hyden – Esperance (B/L/D)

Wave goodbye to Hyden and travel through the wheatbelt town of Lake King, next onto the mineral rich Ravensthorpe, home to a 340 million dollar nickel mine. Depart to the white sandy, pristine beaches of the Recherche Archipelago that is Esperance! Visit Cape le Grand National Park, Thistle Cove and Frenchman's Peak. Explore Bandy Creek Boat Harbour, (if you're lucky you may see some fresh fish coming in to shore!).

Overnight Esperance.

Day 3 McKenzie – Esperance (B/L/D)

The Recherche Archipelago is made up of more than 110 coastal islands. Today, we embark on a cruise to Woody Island. Not only will we be able to appreciate the seals, dolphins and seabirds on our journey to the island—we will take a glass bottom boat tour to view the island marine life. Back on land, visit a fascinating Collection of historical buildings at the Historic Museum Village. Take in some shopping therapy at Mermaid Leather where they make products from Fish Skins. Journey along the Great Ocean Drive, stroll along the boardwalk at Monjigup Lake Reserve where some of the Zamia palms are believed to be more than 1000 years old. Overnight Esperance.



Day 4 Esperance – Bremer Bay (B/L/D)

Back track to Jerramungup we head towards Bremer Bay a beautiful town situated on the South Coast of WA between Albany and Esperance and the Fitzgerald National Park. The town is located at the mouth of the Bremer River, on the Wellstead Estuary, named after the first settler of the area, John Wellstead. The bay was named by John Septimus Roe, who visited the area in 1831, after Sir James Bremer, Captain of HMS Tamar. The area was originally settled in the 1850s with the first homestead, the Wellstead homestead being built in 1857 and the first telegraph station being built in 1875. A second telegraph station was built of stone in 1896 to replace the first one. The views are stunning! Stay overnight in this tranquil town. Overnight Bremer Bay.



Day 5 Bremer Bay – Albany (B/L/D)

We stop in the small town of Manypeaks for morning tea. In Albany visit the National ANZAC Centre then head out to Whale World and its 25 exhibits to view and explore, step aboard the Cheynes IV Whale Chaser and walk into a jaw-dropping exhibit of whale skeletons including the state's largest Pygmy Blue Whale skeleton on display. Photograph the natural wonders; the Gap and the Bridge. After dinner marvel at the stunning views of the city at night from Mount Melville and Mount Clarence (optional). Overnight Albany.

Day 6 Albany – Home (B/L/D)

The journey is not over yet! A visit to Mt Romance takes you on a journey from the wild red WA outback through to the perfume houses of Paris and India's bustling bazaars. Learn about the many uses of Sandalwood and see how this fragrant wood is processed at Mount Romance for use around the world. Enjoy morning tea in Denmark, delight in the Toffee shed with its home made toffee, chutneys, olives, cider and icecream. Jessi leather show room displays an extensive range of ugg boots, slippers, belts, handbags and wallets. Teddy Bears, native Australian animals and hand knitting also compliment the collection. Visit something completely different...Dinosaur World! The only full T-Rex in WA! Get up close and personal with the giants of the Jurassic period or meander the adjoining gardens with the friendly birds. Our last stop is stunning Fernhook Falls, named after a fern cutting tool found in the area. Take a stroll along the boardwalk to the swimming pool and enjoy peaceful views of the beautiful forest. Enjoy our last afternoon tea before departing home...

Tour Calendar 2016/2017

april

			PAGE
11	CASINO, WATERTOWN OR IKEA	1 DAY	4
13	NEWSPAPER HOUSE	1 DAY	4
23	BALINGUP SMALL FARM	1 DAY	4
30	PERTH GARDEN FESTIVAL	1DAY	4

may

3	GOLDEN CIRCLE KALGOORLIE ESPERANCE	6 DAY	9
16	CASINO, WATERTOWN OR IKEA	1DAY	4
18	PERTH CRAFT & QUILT FAIR	1 DAY	4
20	PERTH CRAFT & QUILT FAIR	1 DAY	4
24	WINDY HARBOUR & QUINNINUP	1 DAY	4
25	'GHOST THE MUSICAL'	1 DAY	5

june

1	GHOST THE MUSICAL	1 DAY	5
11	REPTILES, EAGLES & MARGARET RIVER	1 DAY	5
13	CASINO, WATERTOWN OR IKEA	1 DAY	4

july

2	DONNELLY RIVER, GALLERY & TRAM	1 DAY	5
8	CHRISTMAS IN JULY	1 DAY	5
11	CASINO, WATERTOWN OR IKEA	1 DAY	4
20	PILBARA BROOME TOUR	14 DAY	10

august

6	PERTH CRAFT & WOOD SHOW	1 DAY	5
8	CASINO, WATERTOWN OR IKEA	1 DAY	4
17	ELIZABETH QUAYS & PERTH ZOO	1 DAY	5
20	NANNUP GARDEN FESTIVAL	1 DAY	5
24	DOWERIN FIELD DAY	1 DAY	5
27	BALINGUP MEDIEVIL CARNIVALE	1 DAY	6
27	ARALUEN TULIPS & ZANTHORREA	1 DAY	6
29	WILDFLOWER WONDER	4 DAY	12

september

5	CASINO, WATERTOWN OR IKEA	1 DAY	4
10	LIGHTHOUSE & BLACKWOOD RIVER CRUISE	1 DAY	6
13	CRAFT & PATCHWORK TOUR	1 DAY	6
24	KINGS PARK WILDFLOWERS	1 DAY	6
28	PERTH ROYAL SHOW	1 DAY	6
30	KULIN BUSH RACES	3 DAY	13

october

5	EXPLORE KOJONUP, WILDFLOWERS & TRAIN	1 DAY	6
10	CASINO, WATERTOWN OR IKEA	1 DAY	4
15	PEMBERTON DISCOVERY	1 DAY	6
19	MYSTERY TOUR	1 DAY	6
27	NARROGIN, BARNA MIA, NORTHAM	4 DAY	14

november

5	BRIDGETOWN GARDEN FESTIVAL	1 DAY	7
7	CASINO, WATERTOWN OR IKEA	1 DAY	4
14	MYSTERY TOUR EXTENDED	3 DAY	14
25	PENGUINS & GRAIN TERMINAL	1 DAY	7
30	GALLERIA SHOPPING SPREE	1 DAY	7

december

5	CASINO, WATERTOWN OR IKEA	1 DAY	4
11	PATRONS LUNCH	1 DAY	7
15	MANDURAH CHRISTMAS LIGHTS	1 DAY	7

january 2017

9	CASINO, WATERTOWN OR IKEA	1 DAY	4
21	WALPOLE CRUISE & TREETOPS	1 DAY	7
26	AUSTRALIA DAY FIREWORKS	1 DAY	7
28	COLLIE WATERWAYS & WOOD GALLERY	1 DAY	7

february

6	CASINO, WATERTOWN OR IKEA	1 DAY	4
18	BOYUP BROOK COUNTRY MUSIC FESTIVAL	1 DAY	8
19	MYSTERY TOUR	1 DAY	8
25	PEEL ZOO AND DWELLINGUP TRAIN	1 DAY	8

march

11	WAGIN WOOLARAMA	1 DAY	8
13	CASINO, WATERTOWN OR IKEA	1 DAY	4
28	KATANNING DISCOVERY TOUR	1 DAY	8

april

10	CASINO, WATERTOWN, IKEA	1 DAY	4
22	BALINGUP SMALL FARM FIELD DAY	1 DAY	8
28	FREMANTLE PRISON & CRUISE	1 DAY	8

may

8	CASINO, WATERTOWN OR IKEA	1 DAY	4
26	WAVE ROCK, ESPERANCE, BREMMER	6 DAY	15

Phone Enquiries: 1300 233 556

Postal Address: 21003 South West Highway, Mullalyup WA 6252

Email: royalgalatours@bigpond.com

Web: www.royalgalatours.com.au

Like us on facebook 